

*9-Series remotes enable mission critical communications and deliver a tactical advantage.*

See how iDirect Government solutions can empower your team.

contact@idirectgov.com  
703-648-8118

### *About iDirect Government*

iDirect Government LLC, a wholly owned subsidiary of VT iDirect, Inc., is a leader in satellite communications offering mission critical IP-based solutions that ensure secure, high-performance voice, video and data applications whenever and wherever duty calls around the globe.

*The next level of security,  
performance and efficiency  
in satellite communications*

# 9-SERIES REMOTES



[www.idirectgov.com](http://www.idirectgov.com)



**iDirect GOVERNMENT**

SETTING THE STANDARD FOR SECURITY AND PERFORMANCE

[www.idirectgov.com](http://www.idirectgov.com)



# 9-SERIES REMOTES

## Mission Critical Communications

On the world stage, assets are always in motion and intel changes constantly. The need for situational awareness and the ability to mount a fast, effective response are vital. Governments and militaries increasingly rely on satellite communications to connect, coordinate, and command resources in the field.

iDirect Government is already setting the standard for security, performance and efficiency in mission critical IP voice, video and data communications around the globe. And now we're pushing the bar even higher.

## Enabling Next-Level Solutions

Introducing the iDirect Government 9-Series remotes—bringing a new level of capability for airborne, maritime and land-based communications.

The 9-Series remotes deliver significant enhancements in every critical area, from improved speed and performance across all bands to advances in form factor for enhanced efficiency, mobility and ease of use. Combined with application-specific engineering and next-level compliance, certifications and capabilities for the highest assurance of security available, 9-Series remotes are elevating satellite communications like never before.

## Key Features

### NEXT-LEVEL SECURITY

- FIPS 140-2 Level 3 certified
- TRANSEC
- Meets MIL-STD 810G
- WGS Certification ready

### ENHANCED PERFORMANCE

- Dramatically increased data rates
- Higher PPS (packets per second) processing
- Make before break connections
- Extended L-Band range
- Multi-image support

### IMPROVED EFFICIENCY

- SWaP (Size, Weight and Power)
- Enhanced mobility and ease of use
- Native GPS support
- Web user interface

### UNIVERSAL NETWORK SUPPORT

- WGS and HTS
- Defense and commercial networks
- Multicast/Broadcast overlay networks

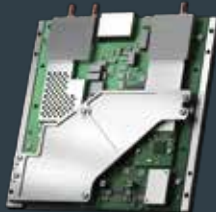
### 900

Higher transmission speeds  
Dual demodulators  
8-Port Gigabit switch



### 950mp

30% SWaP reduction  
Multi-core processor  
Dual Gigabit ports



### 9350

Full featured rack-mounted 900  
First iDirect Government remote with LCD display  
Zeroize button



### 980

Designed for ultra-high-speed COTM  
Dual demodulators  
Extended frequency range



### 9800 AR

Embedded, full featured 980  
1RU form factor  
Embedded CPU and Gigabit switch  
Operable at 25,000 feet  
MIL-STD 810G



### 9800 AE

Embedded, full featured 980  
ARINC 600 4 MCU form factor  
Embedded CPU and Gigabit switch  
Operable at 55,000 feet  
DO-160G



## DEFENSE LINE CARDS

### DLC-T

Supports one-way TRANSEC  
DVB-S2X ready

### DLC-R

Supports up to 16 channels  
Up to 4x increase in Msp/s  
On-board TRANSEC module

